

Alcuni Rivestimenti Some Upholsteries

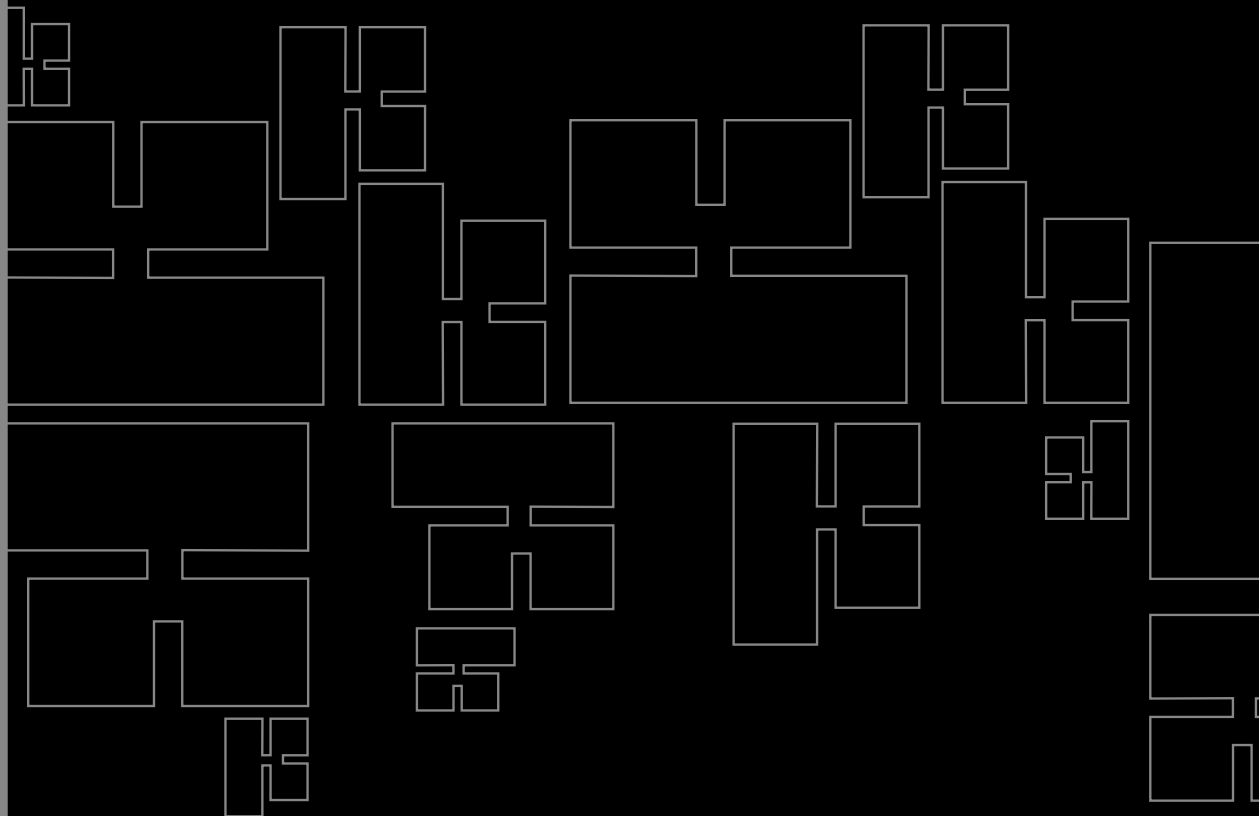
- Colori, tessuti e pelli fotografati sono indicativi
- Colours, fabrics and leathers photographed are indicative

AVVERTENZE GENERALI

I colori chiari, non devono essere messi a contatto con tessuti e capi d'abbigliamento trattati con coloranti non fissati, o con scarse solidità di tintura, onde evitare macchie ed aloni di coloranti di cui non possiamo garantire la pulitura.

GENERAL WARNINGS

To avoid permanent stains, the lighter colours of the article should not be brought into contact with textiles and clothing unfixed dyes. We cannot guarantee the ability to remove unknown dyes from light coloured product.

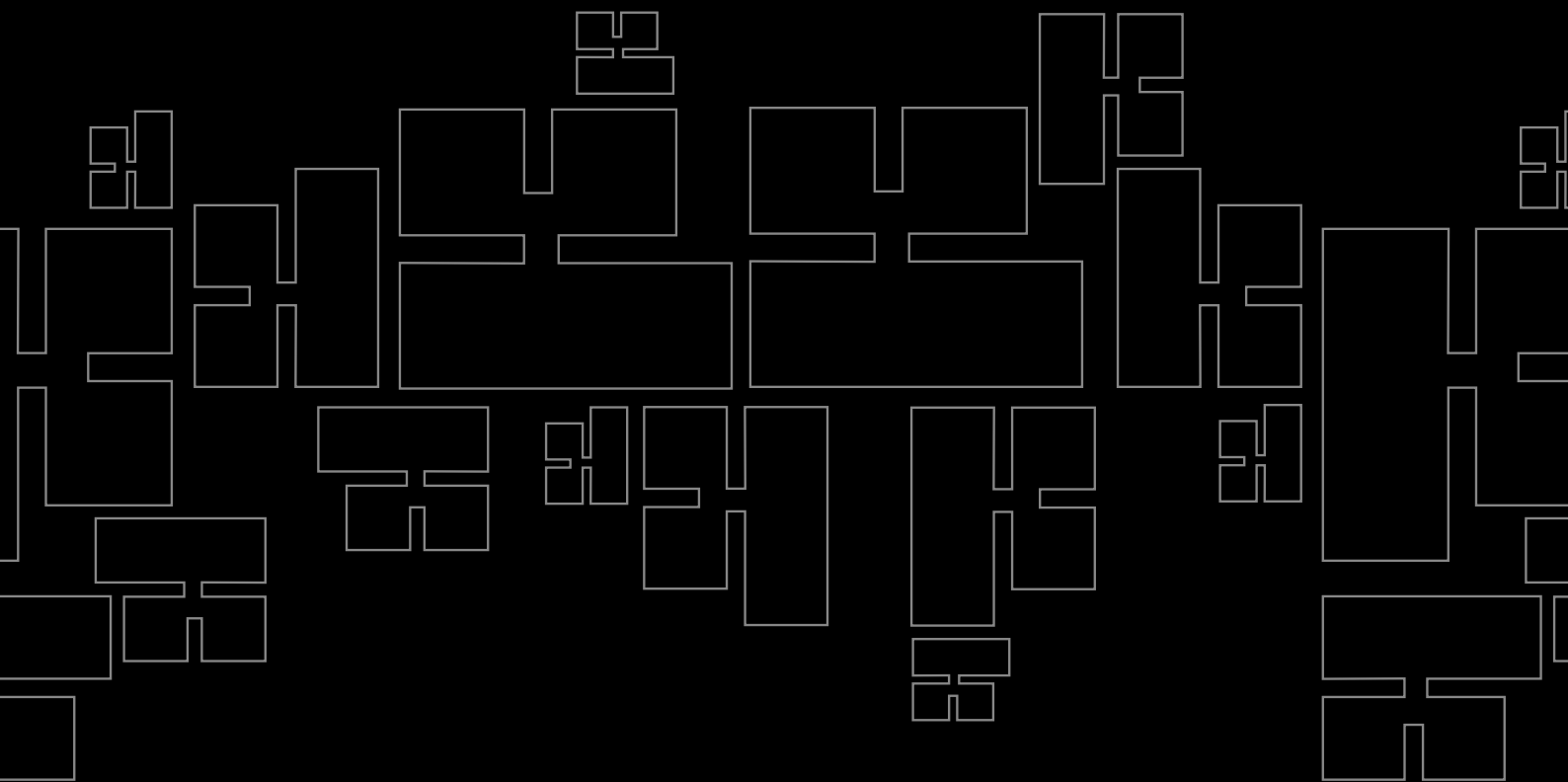


I tessuti spalmati (ecopelli) possono essere sanificati superficialmente come da decreto del Ministero della Salute con soluzioni di acqua e alcool etilico al 70% e prodotti disinfettanti commerciali pronti all'uso. Si consiglia di provare il prodotto su un angolo nascosto della superficie da pulire.

Evidenziamo speciali trattamenti, antimicrobici, antibatterici e antimicotici, che caratterizzano da sempre alcuni nostri rivestimenti, per creare un'efficace barriera difensiva contro batteri, acari e funghi, uniti ad eccezionali caratteristiche di praticità e durata nel tempo.

The coated fabrics (eco-leathers) can be superficially sanitized as per the Decree of the Italian Ministry of Health with solutions of water and 70% ethyl alcohol and commercial disinfectant products ready for use. We suggest to test the product on a small hidden corner of the surface you need to clean.

We focus your attention on special antimicrobial, antibacterial and antifungal treatments, which have always distinguished some of our coatings to create a valid defensive barrier against bacteria, mites and fungi, combined with exceptional features of practicality and durability.



A

Categoria Category

Resistenza alla fiamma - Fire resistance
Certificato Classe 1 UNI 9175 CL. 1 IM
87,5% P.V.C. plastificato - 12,5% cotone
(Martindale 100.000)



PLANET



A 31 F



A 32 F



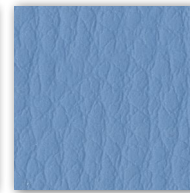
A 29 F



A 37 F



A 28 F



A 30 F



A 35 F



A 26 F



A 34 F



A 38 F



A 39 F



A 36 F



A 27 F

C

Categoria Category

SKILL/SECRET
Resistenza alla fiamma - Fire resistance
Certificato Classe 1 UNI 9175 CL. 1IM - EN 1021 - BS 5852
69% P.V.C. plastificato - 30% cotone - 1% poliuretano
(Martindale 50.000)



SKILL



C 40 F



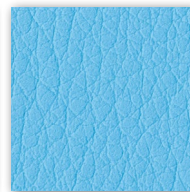
C 41 F



C 42 F



C 43 F



C 44 F



C 45 F



C 46 F



C 47 F



C 48 F



C 49 F



C 50 F



C 51 F



C 52 F

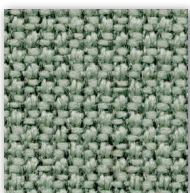
C

Categoria Category

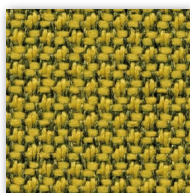
Material: 98% post consumer recycled polyester - 2% polyester
Flammability: EN 1021 1&2 · BS 5852 0&1 CA · TB 117-2013.
Will also pass other flammability standards.
Flame retardant performance is dependent upon the foam used.
Contain no Flame Retardant chemical.
Abrasion resistance: rubs · BS EN 14465 · BS EN ISO 12947-2 (Martindale 100.000)



CURA



C 30 C



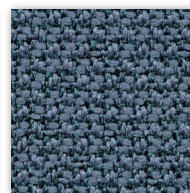
C 31 C



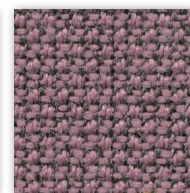
C 32 C



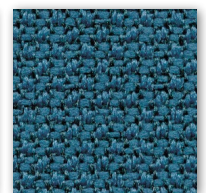
C 33 C



C 34 C



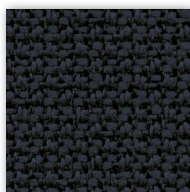
C 35 C



C 36 C



C 37 C



C 38 C

C

Categoria Category

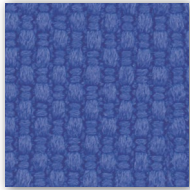
Tessuto altamente ignifugo
Certificato Classe 1 Ministero dell'Interno
Fireproof fabric - Tissu non feu
Brandfester Bezug - Tela ignifuga
100% Poliestere Trevira CS
(Martindale 70.000)



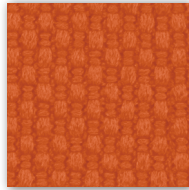
C 381



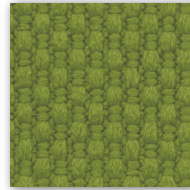
C 38 T



C 383



C 380



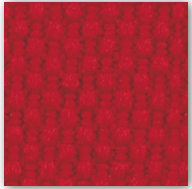
C 385



C 38 L



C 38 H



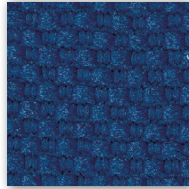
C 382



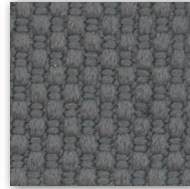
C 386



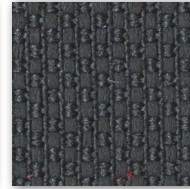
C 387



C-38



C 384



C 38 A



C 388



C 38 G



C 38 M



C 38 P

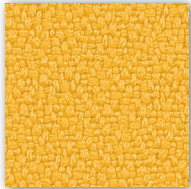
C

Categoria Category

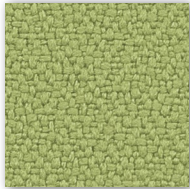
Tessuto altamente ignifugo
Certificato Classe 1 Ministero dell'Interno
Fireproof fabric - Tissu non feu
Brandfester Bezug - Tela ignifuga
100% Xtreme FR®
(Martindale 100.000)



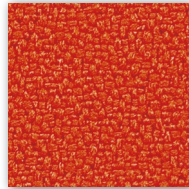
C 335



C 336



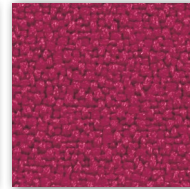
C 332



C 334



C 329



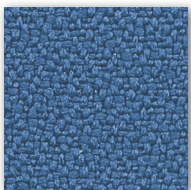
C 337



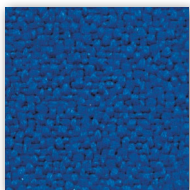
C 327 (Dark brown)



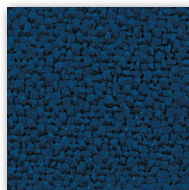
C 340



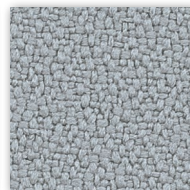
C 325



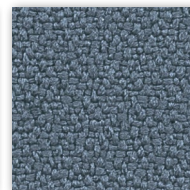
C 326



C 330



C 331



C 324



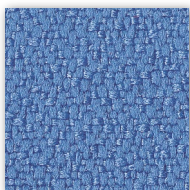
C 328



C 349



C 333

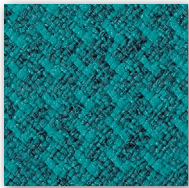


C 338

D

Categoria Category

Post consumer recycled polyester 98%
Polyester 2%
Flammability EN 1021 1&2
BS 5852 0&1 · CA TB 117-2013
(Martindale 100.000)



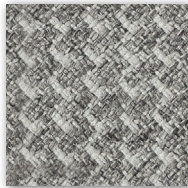
D 51B



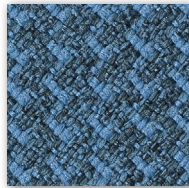
D 52B



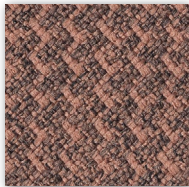
D 53B



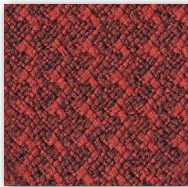
D 54B



D 55B



D 56B



D 57B



D 58B



D 59B

D

Categoria Category

Resistenza alla fiamma - Fire resistance
Certificato Classe 1 IM EN 1021 Part. 1-2
75% Lana - 25% Poliammide / 75% Wool - 25% Polyamide
(Martindale 100.000)



D 501



D 502



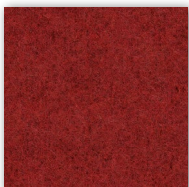
D 503



D 504



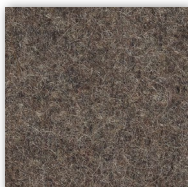
D 505



D 506



D 507



D 508



D 509

D

Categoria Category

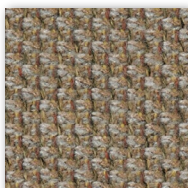
100% post-consumer recycled polyester
Abrasion: rubs (EN ISO 12947-2) Martindale 120.000
Flammability: BS EN 1021 1&2 Cigarette and Match CA TB
117-2013



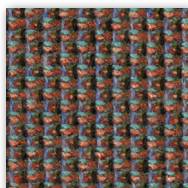
D 40Y



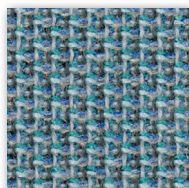
D 41Y



D 42Y



D 43Y



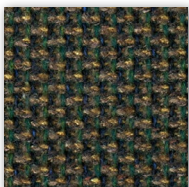
D 44Y



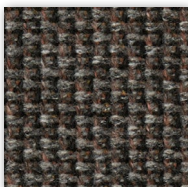
D 45Y



D 46Y



D 47Y



D 48Y

D

Categoria Category

Trattamento antimicrobico - Antimicrobial treatment
Impermeabilità-Waterproof
Resistenza fiamma-Fire resistance
UNI 9175/87 CL.1IM - EN 1021 BS 5852
63% Poliuretano / Polyurethane - 29% Cotone - Cotton 8% PES
IMO A. 652
(Martindale 150.000)



D 420



D 426



D 430



D 427



D 431



D 421



D 423



D 432



D 422



D 425



D 428 (Dark brown)



D 424



D 429

D

Categoria Category

Trattamento antimicrobico - Antimicrobial treatment
Impermeabilità-Waterproof
Resistenza fiamma-Fire resistance
UNI 9175/87 CL.1IM - EN 1021 BS 5852
63% Poliuretano / Polyurethane - 29% Cotone - Cotton 8% PES
IMO A. 652
(Martindale 150.000)



D 470



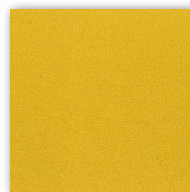
D 471



D 472



D 473



D 474



D 475



D 476



D 477



D 478



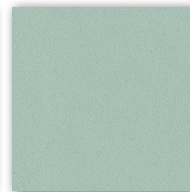
D 479



D 480 (Dark brown)



D 481

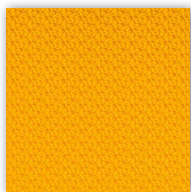


D 482

D

Categoria Category

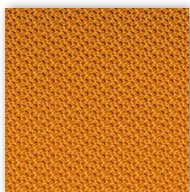
Tessuto ignifugo - Fireproof fabric - Tissu non feu - Brandfester Bezug - Tela ignifuga
Classe 1IM - DIN 4102 B2 - NF P 92-503/M2
100% Vinyl-compound - 100% Polyester Ultra Hi-Loft™ Backing
PERMABLOK® - Waterproof
(Martindale > 100.000)



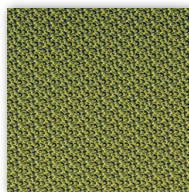
D 801



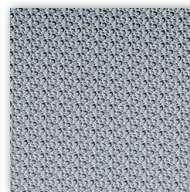
D 802



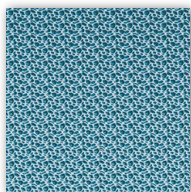
D 803



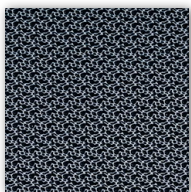
D 804



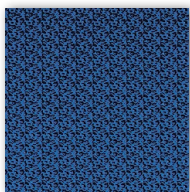
D 805



D 806



D 807



D 808



D 809

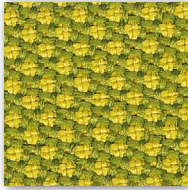
D

Categoria Category

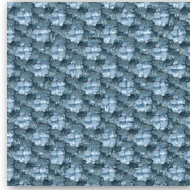
Material: 100% post consumer recycled poliester
 Flammability: EN 1021 1&2 - BS 5852 0&1 Classe 1 - CA TB 117-2013.
 Will also pass other flammability standards.
 Flame retardant performance is dependent upon the foam used.
 Abrasion resistance: rubs - EN ISO 12947-2 (Martindale 100.000)



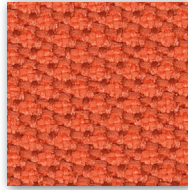
D 40R



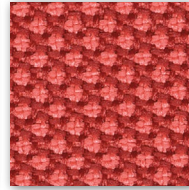
D 41R



D 42R



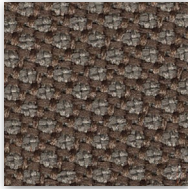
D 43R



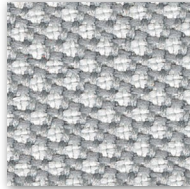
D 44R



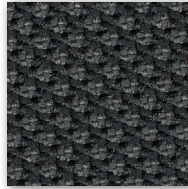
D 45R



D 46R



D 47R



D 48R

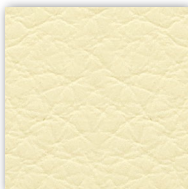
P

Categoria Category

Vera pelle - Genuine leather
 Cuir - Leder - Piel auténtica
 A richiesta disponibili altri colori.
 By request any other colours available.



P 901



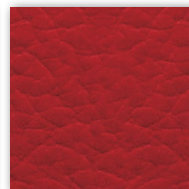
P 915



P 920



P 917



P 909



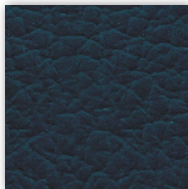
P 905



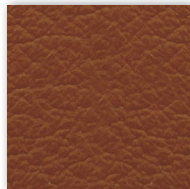
P 911



P 910



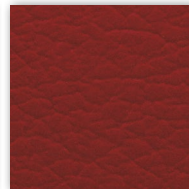
P 912



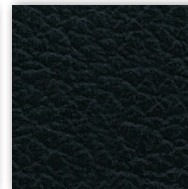
P 908



P 902 (Dark brown)



P 914



P 903

Solo per schienale trapuntato modello
 Only for quilted back model

KLINT

SKILL
 Resistenza alla fiamma - Fire resistance
 Certificato Classe 1 UNI 9175 CL. 1IM - EN 1021 - BS 5852
 69% P.V.C. plastificato - 30% cotone - 1% poliuretano
 (Martindale 50.000)



40T



41T



49T



52T

Solo per modello
 Only for model

KEY LINE

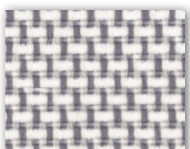
Rete-Mesh-Resille-Membran-Red
 70% Polyester - 30% Polyamid
 Flammability: EN 1021:2014 part 1
 (cigarette test)
 (Martindale 170.000)

4902 SHRINX

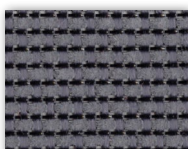
Solo per modello
 Only for model

KROMA, KUPER, KONTAT KARMA, KORIUUM, KOSMO

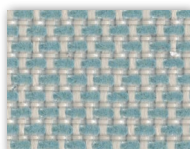
Rete - Mesh - Resille
 Membran - Red
 64% PL - 36% PA
 Martindale 100,000



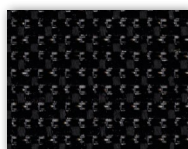
B BEIGE



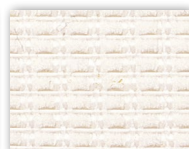
G GRIGIO/GREY



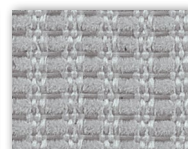
V VERDE/GREEN



N NERO/BLACK



D 218



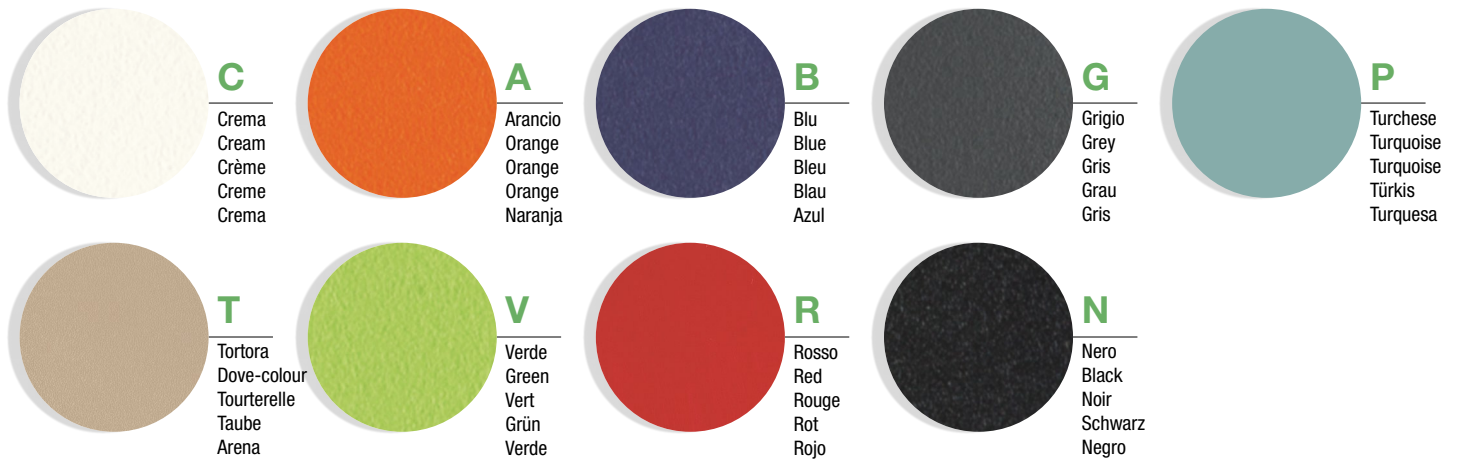
D 221



D 222

KICCA KALEA

COLORI POLIPROPILENE
POLYPROPYLENE COLOURS



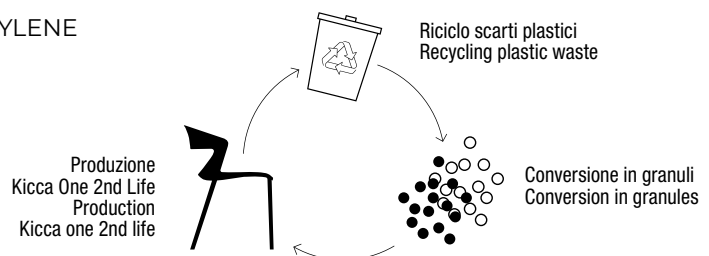
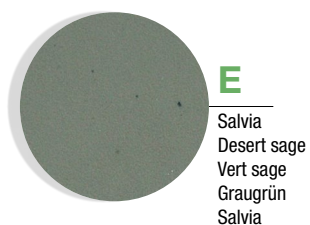
KICCA ONE

COLORI POLIPROPILENE RINFORZATO FIBRA VETRO
FIBERGLASS-REINFORCED POLYPROPYLENE COLORS



KICCA ONE 2ND LIFE

POLIPROPILENE RICICLATO - RECYCLED POLYPROPYLENE



KRIZIA

COLORI POLIPROPILENE
POLYPROPYLENE COLOURS



KLIA

COLORI POLIPROPILENE RINFORZATO FIBRA VETRO
FIBERGLASS-REINFORCED POLYPROPYLENE COLORS



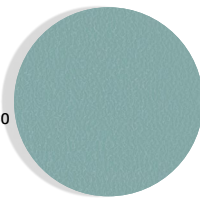
C

Crema
Cream
Crème
Crema
Crema



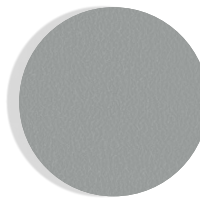
A

Rosa antico
Old rose
Vieux rose
Altrosa
Rosa antiguo



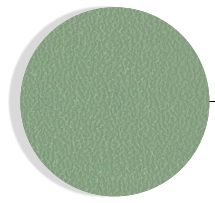
P

Turchese
Turquoise
Turquoise
Türkis
Turquesa



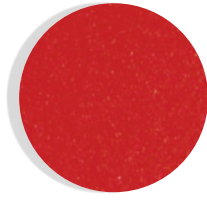
G

Grigio
Grey
Gris
Grau
Gris



V

Verde
Green
Vert
Grün
Verde



R

Rosso
Red
Rouge
Rot
Rojo



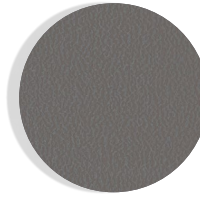
T

Tortora
Dove-colour
Tourterelle
Taube
Arena



Y

Giallo
Yellow
Jaune
Gelb
Amarillo



S

Grigio ardesia
Slate grey
Gris ardoise
Schiefergrau
Gris pizarra

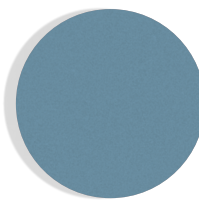
KUARK

COLORI POLIETILENE
POLYETHYLENE COLOURS



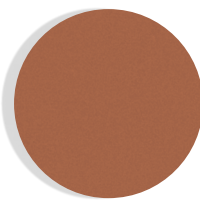
BC

Bianco
White
Blanc
Weiss
Bianco



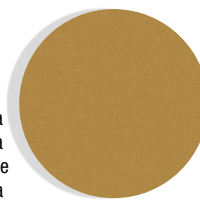
AZ

Azzurro
Light Blue
Bleu clair
Hellblau
Azul Claro



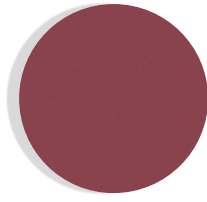
TR

Terracotta
Terracotta
Terre Cuite
Terrakotta
Terracotta



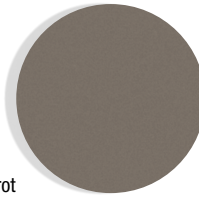
SE

Senape
Mustard
Moutarde
Senf
Mostaza



BD

Bordeaux
Burgundy
Bordeaux
Bordeauxrot
Budeo

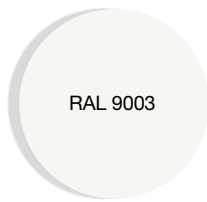


LA

Lava

KENSHO

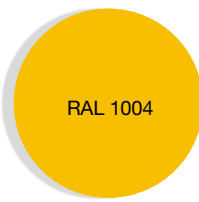
COLORI PIANI-BASI
TOPS-BASES COLOURS



B

RAL 9003

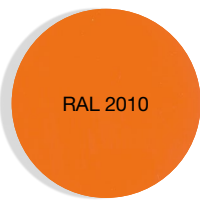
Bianco
White
Blanc
Weiss
Blanco



G

RAL 1004

Giallo
Yellow
Jaune
Gelb
Amarillo



A

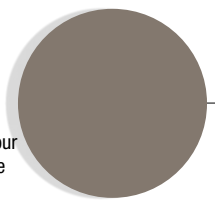
RAL 2010

Arancio
Orange
Orange
Orange
Naranja



T

Tortora
Dove-colour
Tourterelle
Taube
Arena

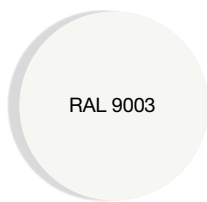


L

Lava

KAPÌO

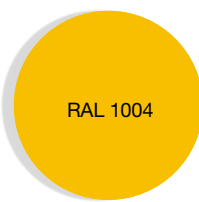
COLORI PIANI-BASI
TOPS-BASES COLOURS



B

RAL 9003

Bianco
White
Blanc
Weiss
Blanco



G

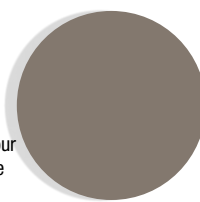
RAL 1004

Giallo
Yellow
Jaune
Gelb
Amarillo



T

Tortora
Dove-colour
Tourterelle
Taube
Arena



L

Lava